

Spacious and bright attic flat in the prestigious residential neighborhood of Ořechovka, Prague 6

Summary:

Price: 10.800.000,- Kc
Type: attic apartment 4+kk - new brick building from 2004
Area size: 159 m²
Balcony: 9 m²
Terrace: possibility to build a roof terrace of 130 m²
Floor: 4th floor
Elevator: yes
Parking: yes, 1 indoor parking place included in the price
Address: Na Rozdilu 24, Praha 6



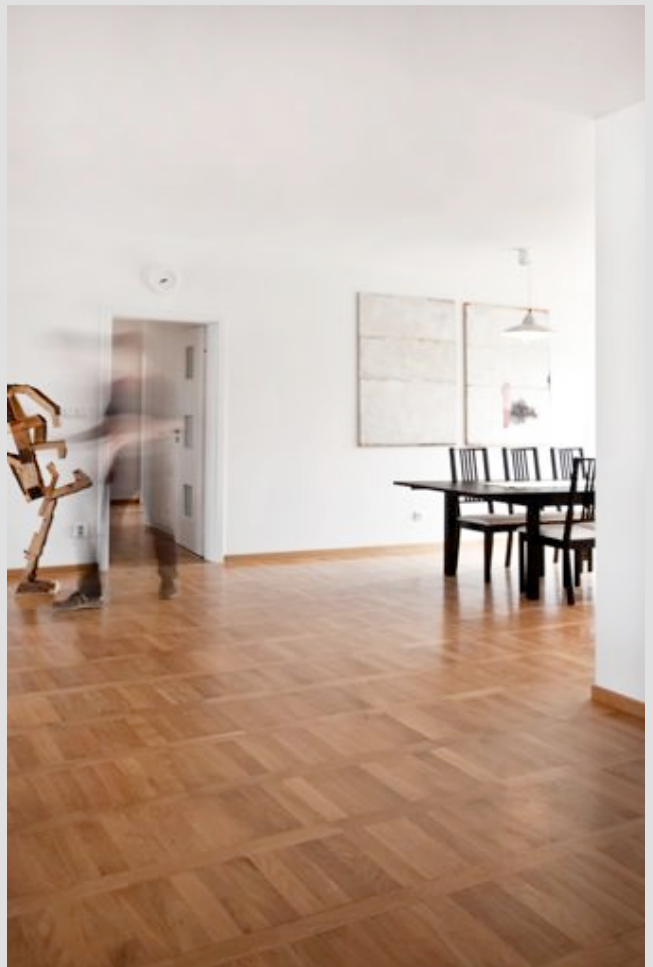
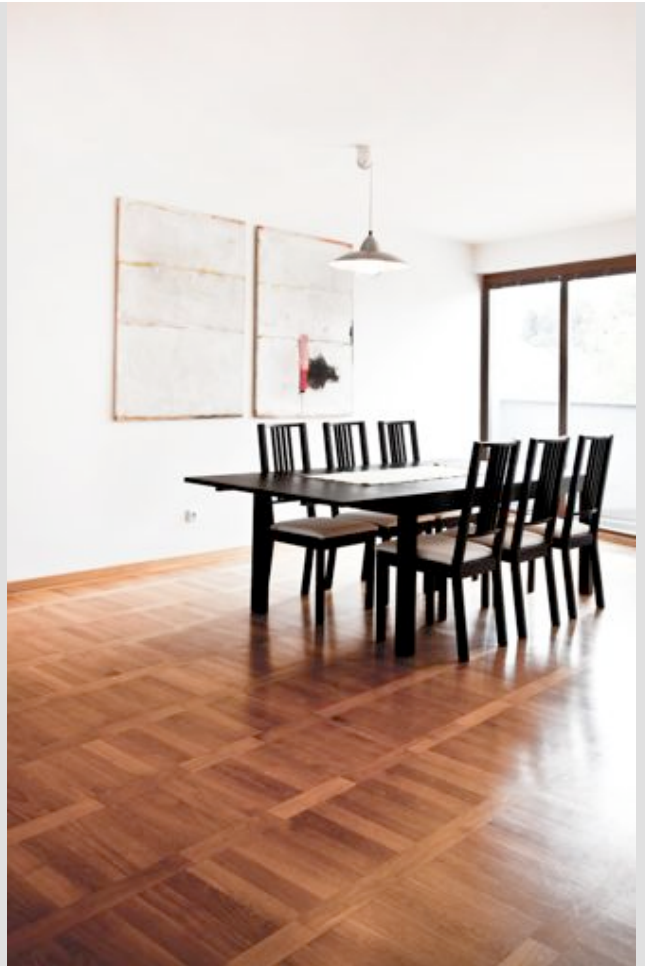
To arrange a viewing:
Rafael.montesinos@mastgroup.org
+420 773 09 11 09



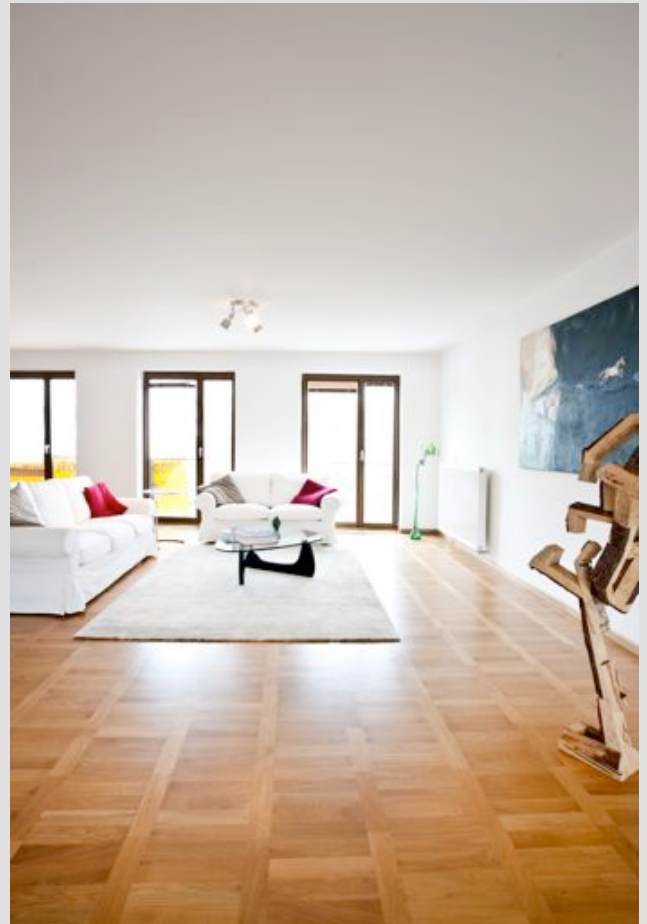
Description:

Airy and spacious, furnished 3-bedroom 2-bathroom apartment with a balcony situated on the 4th floor of a residential building with a lift. Located within easy reach of the airport, tram and bus stops on Evropská street and the metro station Dejvická, steps from the prestigious residential neighborhood, Ořechovka. This modern flat is finished with top quality materials including solid wood flooring and floor to ceiling windows. It offers an entry hall, spacious living room, open plan kitchen, three bedrooms (master bedroom with en-suite closet and full bathroom) and a 2nd bathroom and guest toilet. 130 m² roof space is possible to built as a terrace. Very nice public garden for children across the street. The purchase price includes private cellar and one garage space in the building.

Dinning Room



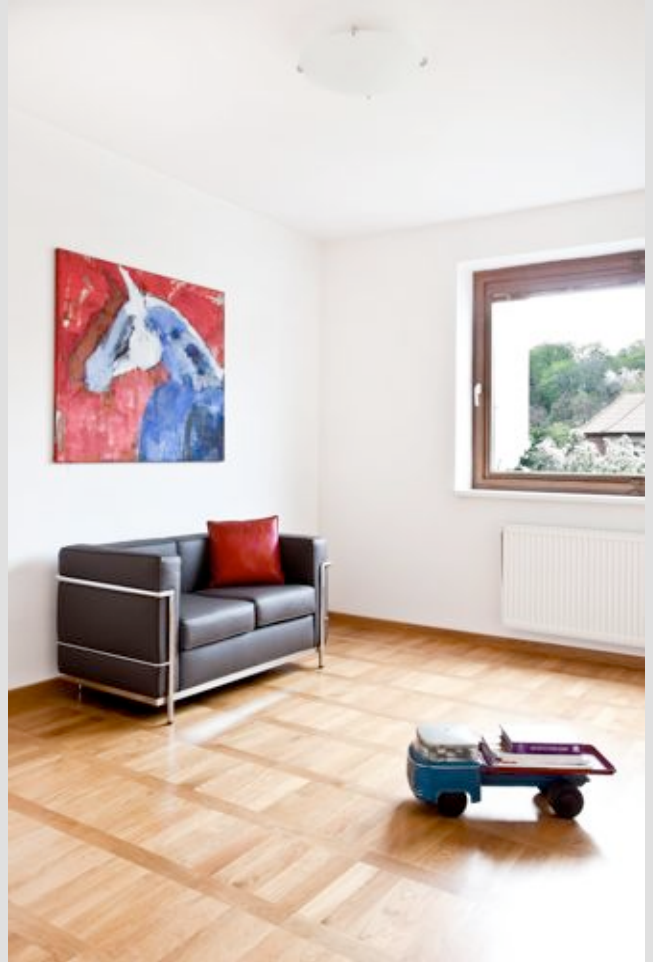
Living Room



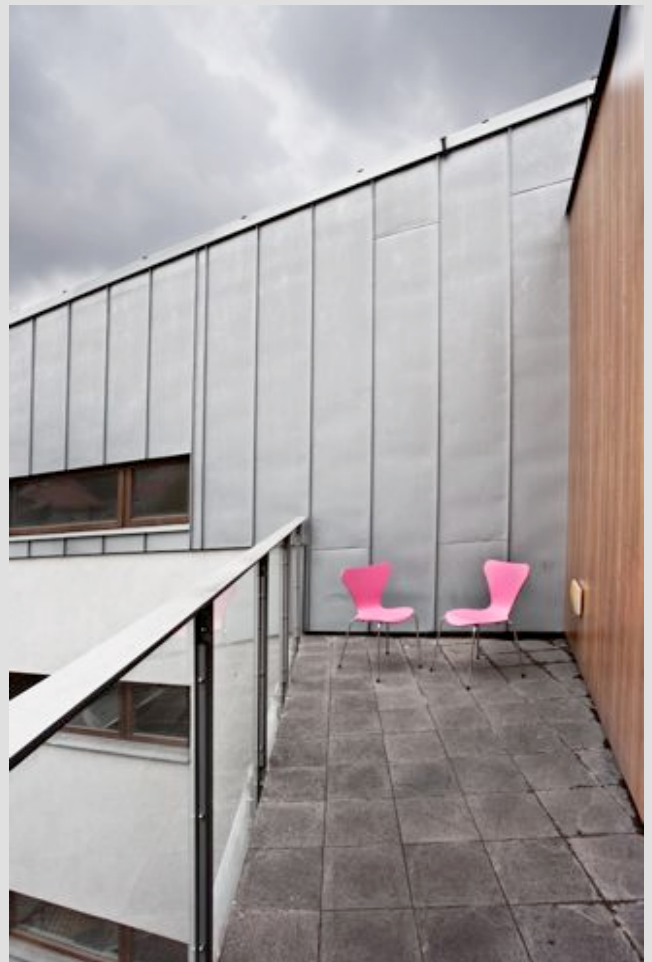
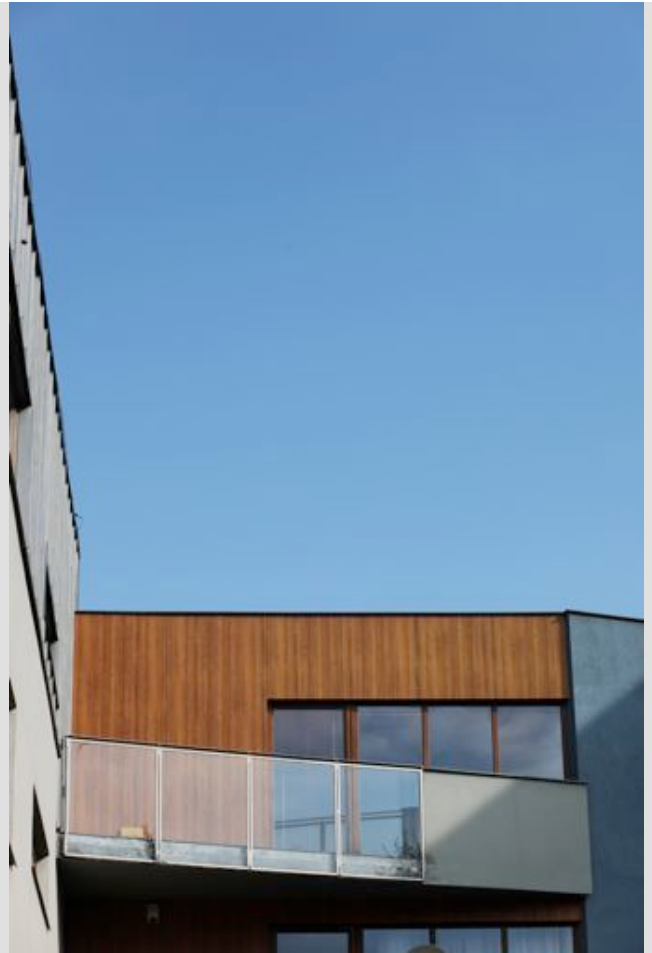
Kitchen



Bedrooms



Balcony



Building

